

INTRODUCTION

"Never doubt that a small group of thoughtful citizens can change the world; indeed it's the only thing that ever has."

Margaret Mead

This coordinated plan has been developed through a collaborative process that involved many groups and individuals committed to comprehensive and effective planning for children and families in Lane County. This document and the planning described within, represents the community's sense of responsibility and obligation to support and ensure:

A caring and engaged community that promotes, supports, and enhances a healthy, nurturing, and safe environment within which all Lane County children, youth, and families thrive.

Lane County Planning Process

The structure of the planning process is illustrated in Figure 2, and includes existing planning groups, a Coordinated Planning Workgroup, and a System Steering Committee.

- Existing planning groups reviewed the guidelines and High-Level Outcomes for SB 555 Phase II and developed Priorities and Strategies in their unique areas of expertise. Planning group Priorities and Strategies were taken to the Coordinated Planning Workgroup.
- The Coordinated Planning Workgroup consists of representatives of the existing planning groups. The Workgroup reviewed the guidelines of SB 555 Phase II, reviewed Priorities and Strategies submitted by existing planning groups, and provided recommendations for selection of local Priorities and Strategies to the System Steering Committee.
- The System Steering Committee consists of chairs and executive directors of partner agencies, organizations, and committees. The Steering Committee reviewed the guidelines of SB 555 Phase II, developed a vision statement, added local input to planning principles, reviewed Coordinated Planning Workgroup recommendations for Priorities and Strategies, and selected community Priorities and Strategies to be used in this planning process.

INTRODUCTION

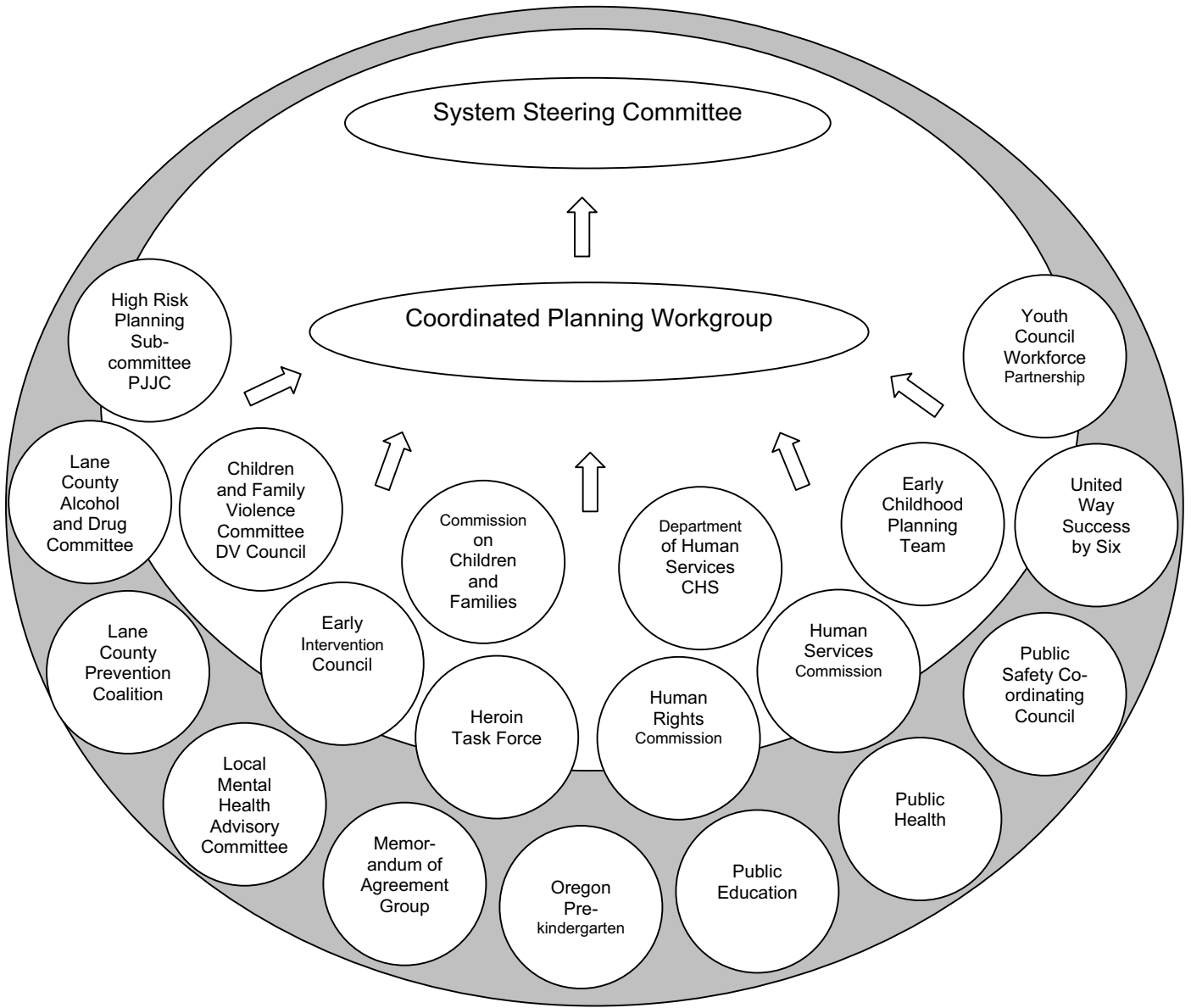


Figure 2. SB 555 Planning Process

Inclusiveness in Planning

This document represents the combined efforts of the large number of committed individuals, throughout the community, who worked to ensure that the process was coordinated, comprehensive, and reflective of Lane County.

- Representatives of existing planning groups submitted priorities and strategies, reviewed concepts and ideas, and provided vital input.
- Representatives of agencies, organizations, and committees, and other interested individuals, provided community input and support, guidance, and a common vision.

INTRODUCTION

- All worked to address a common vision of a “Caring and engaged community that promotes, supports, and enhances a healthy, nurturing, and safe environment within which all Lane County children, youth, and families thrive”.

Existing planning groups and agencies, organizations, and committees were kept informed of the planning process and participated at varying levels. Both existing planning groups and other represented agencies, organizations, and committees are listed below. Individual representatives and their specific involvement in the planning process are included as Appendix B, *Inclusion Matrix*.

Existing Planning Groups, Represented Agencies, Organizations, and Committees

- Arc of Lane County
- Birth to Three
- CASA of Lane County
- Catholic Community Services
- CentroLatino Americano
- Children and Family Violence Committee of the Domestic Violence Council
- Committed Partners for Youth
- City of Eugene, City Manager’s Office
- City of Eugene, Parks and Recreation
- Coordinated Community Response to Intimate Partner Violence
- Department of Human Services, Community Human Services, Service Delivery Area 5
- Direction Services
- Early Childhood Planning Team
- Early Intervention Services
- Family Relief Nursery - South Lane
- Family Resource Centers
- Family Violence response Initiative
- Food for Lane County
- Head Start of Lane County
- Heroin Task Force
- High Risk Planning Subcommittee of the Prevention Juvenile Justice Committee
- Human Rights Commission
- Human Services Commission
- Kidsports
- Lane Council of Governments
- Lane County Alcohol and Drug Committee of the Local Mental Health Advisory Committee
- Lane County Commission on Children and Families
- Lane County Department of Health and Human Services
- Lane County Department of Children and Families
- Lane County Department of Youth Services
- Lane County Domestic Violence Council
- Lane County Healthy Start
- Lane County Public Health

INTRODUCTION

- Lane County Prevention Coalition
- Lane County Public Safety Coordinating Council
- Lane Education Service District
- Lane Family Connections
- Lane ShelterCare
- Lane Workforce Partnership
- Lanecare
- Local Mental Health Advisory Committee
- Looking Glass Youth and Family Services
- Memorandum of Agreement Committee
- NAACP
- Network for Immigrant Justice
- Oregon Social Learning Center
- Parent Partnership
- Pearl Buck Center
- PSCC/CCF Prevention and Juvenile Justice Committee
- Relief Nursery - Eugene
- Springfield School District
- St. Vincent dePaul
- United Way
- University of Oregon
- Womenspace
- Youth Council of the Lane Workforce Partnership

Document Layout

The Lane County SB 555 Phase II planning document begins with an *Executive Summary* and *Introduction*, and continues with a *Community Profile* that includes significant contextual factors that affect data trends or planning analysis. The next chapter, *Priorities and Strategies* summarizes the priorities and strategies by High-Level Outcome. The remainder of the document is presented within the four wellness goals identified in Phase I planning. The relationship of Wellness Goals and the nineteen High-Level Outcomes is shown in Figure 3.

At the beginning of the *Community Profile* and Goal sections, a table summarizes data indicators. Each table includes the data source, indicates whether the factor is an Oregon Benchmark, and provides an assessment of how well the county is doing – in relation to the state, and the county trends (☺, ☹, ☹).

Each of the four Goal chapters begins with local factors affecting the data or analysis. Within the each Goal chapter, there are High-Level Outcome sections that include strengths, assets, gaps and barriers, data indicators, and priorities, strategies, and rationale. The final section of the document includes the *Preliminary Measurement Plan*. The Appendices are intended to provide further information to support the narrative in the text.

INTRODUCTION

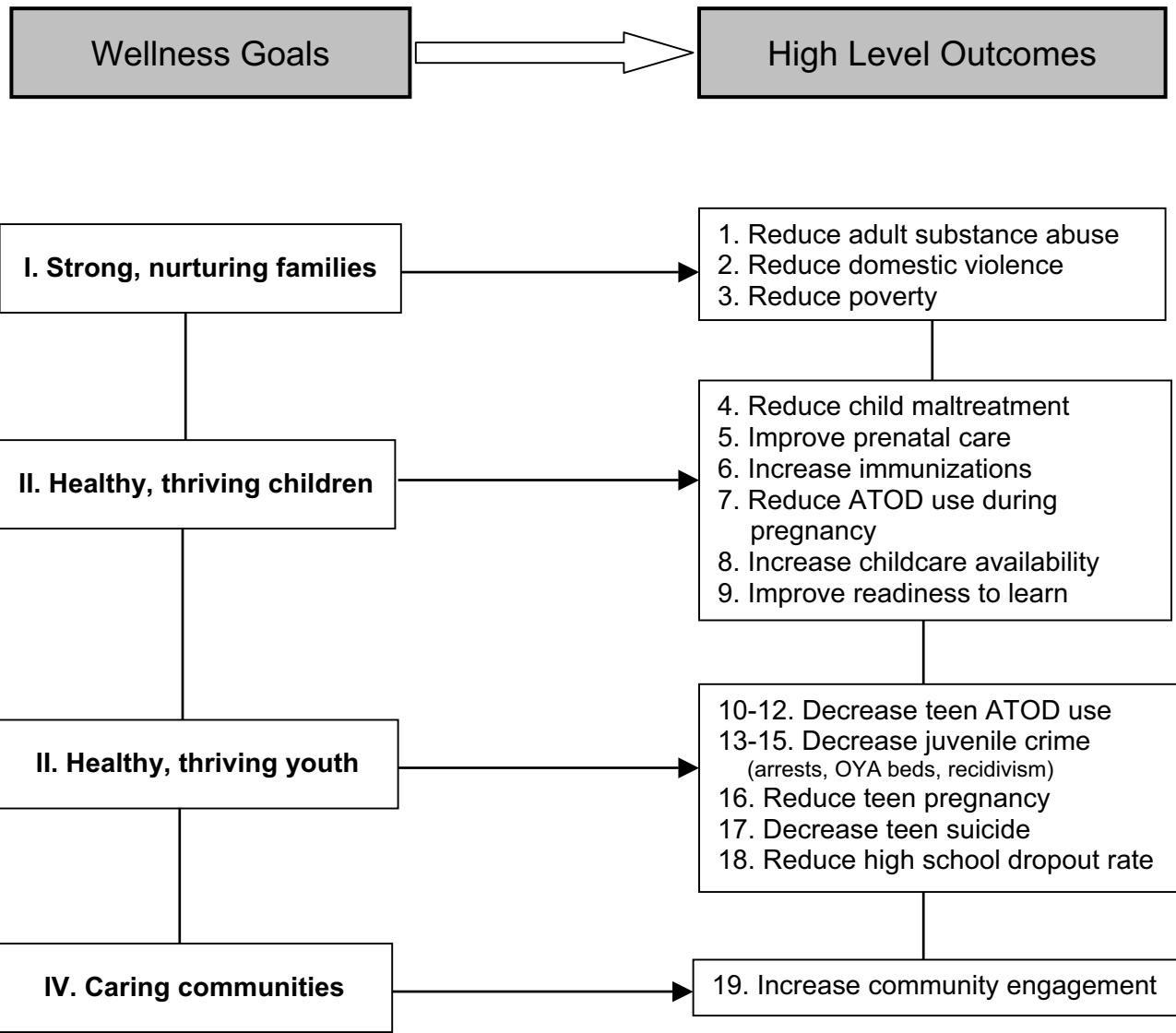


Figure 3. Comprehensive Planning Wellness Goals and High-Level Outcomes

INTRODUCTION

Sources of Data and Information

Information and data were gathered for this phase of SB555 Comprehensive Planning from existing plans and data sources, and through surveys.

State and National Sources

Most high-level outcome data was provided in the SB555 Joint Data Book on the Oregon Department of Human Services – Office of Alcohol & Drug Abuse Programs' (OADAP) website (<http://www.oadap.hr.state.or.us/sb555/jointdb.html>). In some cases, county data was not available, or the most recent years not provided, in other cases, data only available at the local level was used as indicators. Other state or national sources of data for the high-level outcomes and other indicators include:

- Housing and Urban Development (HUD) website (<http://www.hud.gov>); National Association of Homebuilders (NAHB) website (<http://www.nahb.com>); Oregon Benchmarks, Oregon Progress Board (OPB), *County Data Book 1999* and website (<http://www.econ.state.or.us/opb>); Oregon Department of Administrative Services (DAS) – Office of Economic Analysis (<http://www.oea.das.state.or.us>);
- Oregon Employment Department (OED), *2000 Regional Economic Profile* and (<http://olmis.emp.state.or.us>); Oregon Department of Education (ODE) (<http://www.ode.state.or.us>); Oregon Department of Housing and Community Services (HCS) (<http://www.hcs.state.or.us>); Oregon Department of Human Services – Office of Alcohol & Drug Abuse Programs (OADAP), *Lane County Databook 2000* (<http://www.oadap.hr.state.or.us>); Oregon Department of Human Services – Adult and Family Services (AFS) Division (<http://www.afs.hr.state.or.us>); Oregon Economic and Community Development Department (OECD); Oregon Health Division (OHD) – Center for Health Statistics/Vital Statistics (<http://www.ohd.hr.state.or.us/chs>); Oregon Secretary of State – Elections Division (OSS-ED) (<http://www.sos.state.or.us/elections>); State of Oregon Report of Criminal Offenses and Arrests, Oregon Uniform Crime Reporting, Law Enforcement Data System reports (LEDS); US Census Bureau (<http://www.census.gov>)

Local Sources

For this phase of the planning process, the following sources of information were used to identify contextual factors for the *Community Profile*, indicators in addition to the high-level outcomes, and community strengths and assets, and gaps and barriers, related to children and families in Lane County. If available, state data were paired with county data. For some of the indicators, only county data were available.

INTRODUCTION

Local Plans and Documents

- Early Childhood Plan; Comprehensive Strategy for Serious, Violent, and Chronic Offenders; Department of Human Services, Community Human Services; Food for Lane County Annual Report; Heroin Task Force; Human Services Commission; Lane County Juvenile Crime Prevention Plan; Lane County Alcohol and Drug Abuse Prevention and Treatment Plan; Lane County Department of Youth Services; Lane County Domestic Violence Council; and Lane County Prevention Coalition, *Lane County Risk Assessment 2001 and 2000 County Profile*

LCCCF Surveys

- **Agency Survey** – The Lane County Commission on Children and Families *Agency Survey* was conducted by the University of Oregon -- Oregon Survey Research Laboratory and provides information about agency characteristics, agency funding, clients served, services provided, and perceptions of barriers to service. Some gaps and barriers were identified by the agency staff who participated in the survey. Methods and results are included in Appendix D.
- **Community Survey** – The Lane County Commission on Children and Families *Community Survey* was conducted by the University of Oregon -- Oregon Survey Research Laboratory and provides information about household characteristics, perceptions of service quality, barriers to service, parental problem solving, perceptions of community safety, and community involvement. Methods and results are included in Appendix E.

The analysis of the gaps from this survey fell into three general frameworks: (a) a comparison of the perceived state of children and families and the quality of services for children and families, (b) a comparison of needed community services and those that were utilized, and (c) whether the services met the need. In the cases where the needed services were not found, barriers were identified.

Other Local Surveys

- United Way Household Survey 2000; United Way Success by Six Parenting Norms Survey 2000; Head Start of Lane County Community Assessment 1999.

Other Information

In addition, other information was summarized and included as appendices:

- A list of services and supports is included as Appendix G, *Partner Identification Matrix*.
- A list of current planning processes is included as Appendix H, *Planning Activity Identification Matrix*.

INTRODUCTION

~ blank ~