

Special Waste

Some forms of waste are so toxic or dangerous that they require special handling and disposal. Asbestos and sharps material are among the most common, and the most dangerous.

Both these materials require special handling in order to be disposed of safely. In most cases special packaging is required to remove or transport these materials.

Contact Lane County Waste Management at 541-682-4120 any time you have questions about special waste disposal or visit: www.lanecounty.org/HazWaste.

For questions about waste reduction in general call 541-682-4339 or visit: www.lanecounty.org/Recycle

Sharps Disposal at Transfer Stations (In approved containers ONLY see details inside)

Cottage Grove • 78760 Sears Rd • 541-942-8986
Wed-Sat, 8am-6pm all year

Creswell • 34293 Cloverdale Rd • 541-895-3274
Wed-Sat, 8am-6pm all year

Florence • 2820 N Rhododendron Dr • 541-997-6243
Mon-Sat, 8am-6pm all year

Glenwood • 3100 E 17th Ave, Eugene • 541-682-4120
Mon-Sat, 8am-6pm (Winter)

London • 73111 London Rd, Cottage Grove • 541-942-0120
Sat only. 9am-5pm (Winter)

Low Pass • 22377 Hwy 36, Cheshire • 541-998-8215
Fri & Sat. 9am-5pm (Winter)

Mapleton • 13570 Hwy 126 • 541-729-4787
Sat only. 9am-5pm (Winter)

Marcola • 38935 Shotgun Creek Rd • 541-933-2823
Wed-Sat. 9am-5pm (Winter)

McKenzie Bridge • 55805 McKenzie Hwy • 541-822-3748
Mon & Thu, 1pm-5pm • Sat, 9am-5pm (Winter)

Oakridge • 48977 Kitson Springs Rd • 541-782-3923
Wed-Sat, 8am-6pm all year

Rattlesnake • 82572 Rattlesnake Rd, Dexter • 541-937-3403
Wed-Sat. 9am-5pm (Winter)

Swishhome • 13711 Hwy 36 • 541-268-4841
Sat only. 9am-5pm

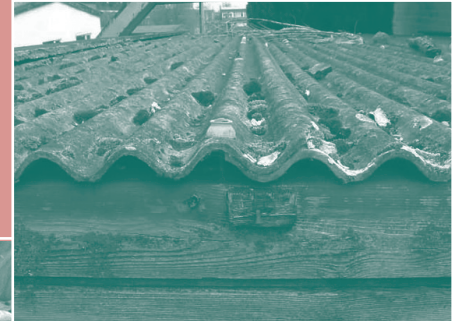
Veneta • 13711 Hwy 36 • 4444 Bolton Hill Rd • 541-935-1297
Mon-Sat, 8am-6pm all year

Vida • 43843 McKenzie Hwy, Leaburg • 541-896-3643
Wed-Sat. 9am-5pm (Winter)

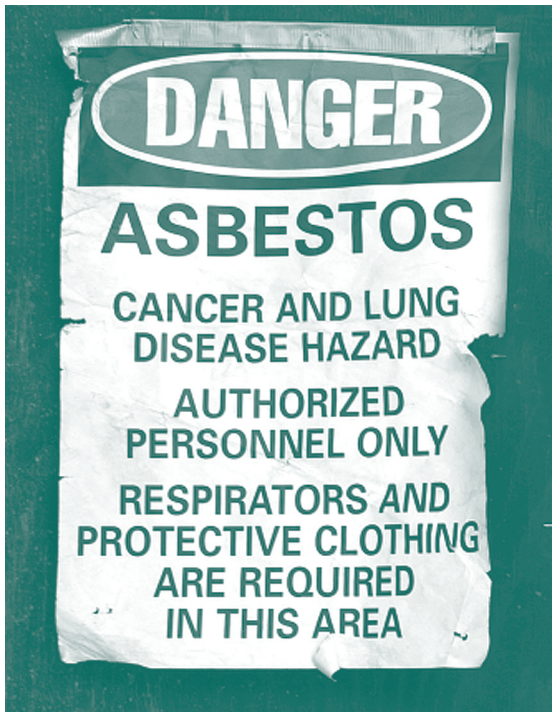
Walton • 18585 Transformer Rd • 541-935-5348
Sat only. 9am-5pm (Winter)

Note: Winter hours are posted above. Some sites have slightly extended summer hours. Visit www.lanecounty.org/recycle call 682-4120.

Recycler's Guide to Asbestos & Sharps Disposal

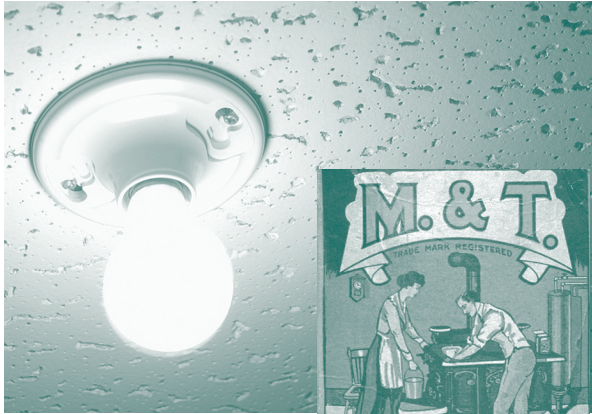


Protecting
human health
and the environment



**Lane County Public Works
Waste Management Division**

Asbestos & Sharps Disposal



Asbestos Disposal

Asbestos is a naturally occurring fibrous form of mineral silicate. This material was used in building products because it is fire-retardant, making it ideal for application as insulation. Many building materials manufactured before 1987 contain asbestos, including vinyl flooring, cement asbestos board used as siding and roofing, pipe and boiler insulation, ceiling texture coats such as popcorn ceiling and acoustical tiles, and about 3000 other construction materials.

Diseases associated with asbestos inhalation include lung cancer, asbestosis, and mesothelioma, a deadly cancer of the lining of the lungs. Minimize exposure by following specified handling procedures and by wearing approved respirators and protective clothing. No one who is unfamiliar with these procedures should attempt to remove or otherwise disturb asbestos-containing materials.

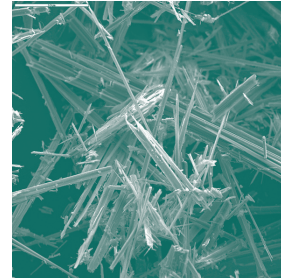
By federal law, material that contains more than 1% asbestos is considered asbestos-containing material (ACM) and must be handled and disposed of properly. In Lane County, the Lane Regional Air Protection Agency (LRAPA) regulates construction, demolition and remodeling projects that impact ACM, as well as disposal of asbestos wastes. Any person intending to demolish or renovate any structure, camper or trailer containing friable asbestos must notify the authority ten days in advance and comply with detailed requirements covering the project. Residential owner-occupants are exempted from many regulations. For more information about LRAPA's requirements, call 541-736-1056.

Lane County Waste Management Division (LCWMD) accepts both friable and non-friable asbestos for disposal at Short Mountain Landfill. **Special packaging procedures and a disposal appointment are required.**

For more information about asbestos disposal procedures, call 541-682-4120.

Sharps Disposal

Sharps are medical needles, scalpels, and other small sharp instruments. Lane County accepts sharps from households and businesses.



Those of us who make our living handling other people's garbage are concerned with sharps. Used needles turn up where we work... at the landfill, the recycling center, in garbage trucks, and at our disposal sites. Sharps can be extremely hazardous to human health.

Sharps come from diabetics, livestock and pet owners, and others who must give injections at home. If you generate sharps at home, contact your garbage hauler to find out about the sharps collection service they provide, or use the free household sharps disposal services offered by LCWMD.

Lane County accepts household sharps at all waste disposal and recycling sites for FREE. Business sharps are only accepted at Short Mountain Landfill for a charge. Package

sharps in a commercially available sharps box or other red, rigid, sealed container (red liquid laundry detergent bottles work great for sharps. Pop bottles, coffee cans, or milk jugs ARE NOT APPROPRIATE PACKAGING FOR SHARPS).

