

Richard Sedlock

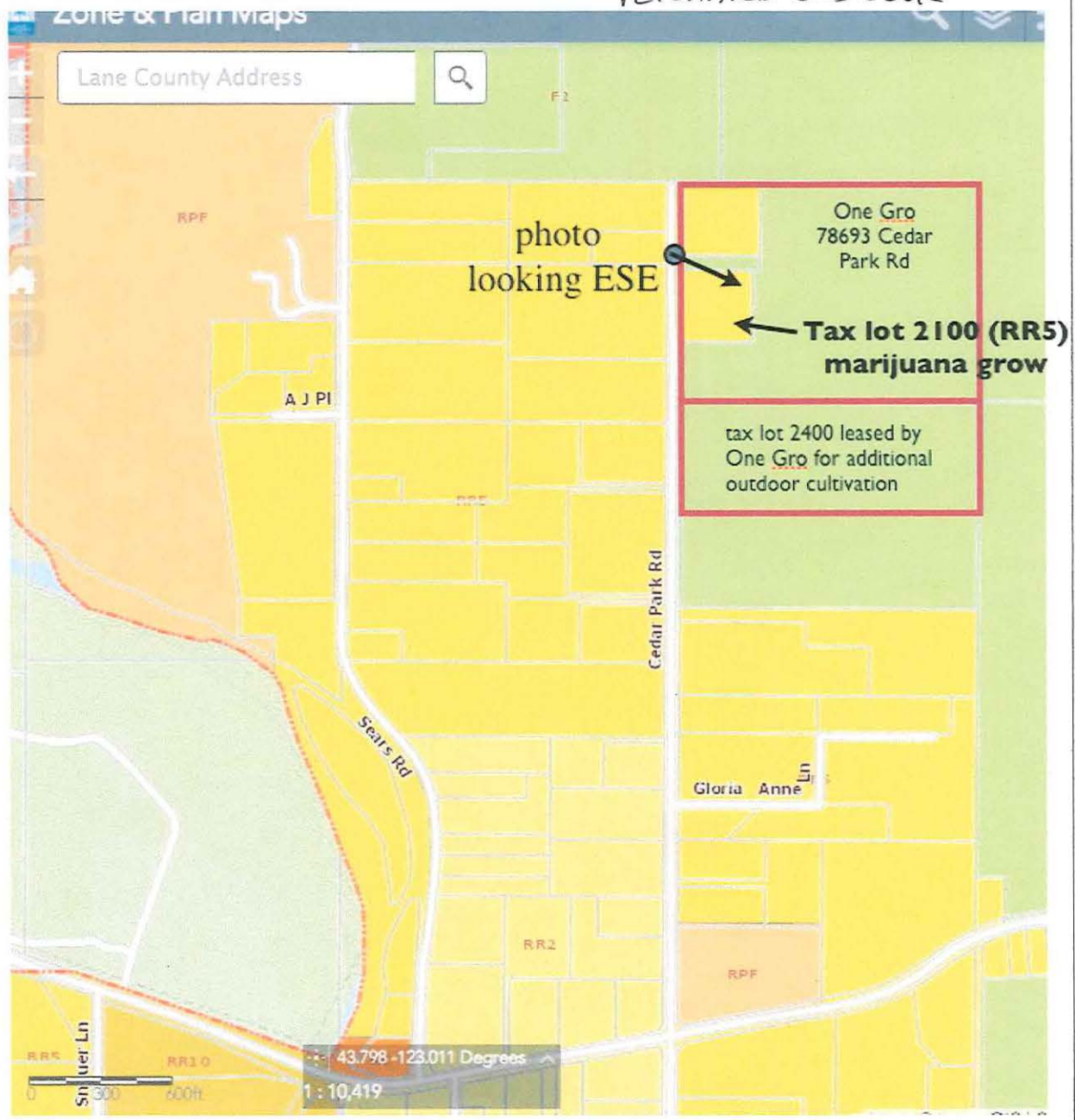
Violations of state and county marijuana regulations on Cedar Park Rd, Cottage Grove

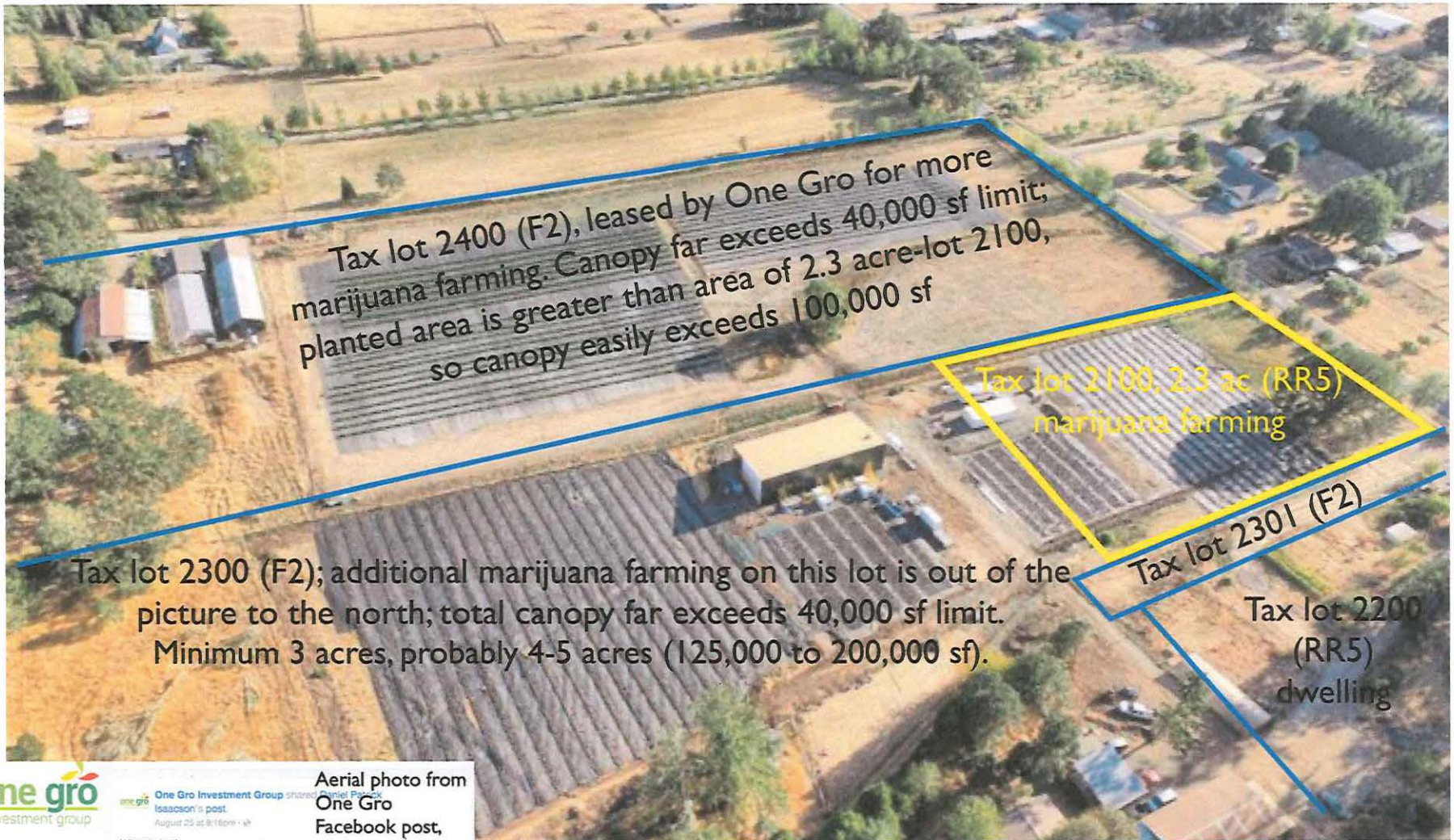
We wish to draw your attention to likely violations of state and county regulations pertaining to marijuana farming by the One Gro operation at 78693 Cedar Park Rd in Cottage Grove.

The map at right is an excerpt of the county's zoning map. Red boxes outline One Gro's marijuana operations, which include a processing facility and farming at their 78693 Cedar Park Rd, and farming on a leased lot to the south.

The map shows that 78693 Cedar Park Rd includes 4 tax lots: two F2 and two RR5. As shown in the photographs on the next two pages, tax lot 2100, zoned RR5, is being used to grow marijuana on a large scale—probably well in excess of the state's 40,000 sf canopy limit.

The annotated aerial photograph on the next page shows that One Gro's farming operations on the two largest tax lots far exceed the state's 40,000 sf canopy limit.





Tax lot 2400 (F2), leased by One Gro for more marijuana farming. Canopy far exceeds 40,000 sf limit; planted area is greater than area of 2.3 acre-lot 2100, so canopy easily exceeds 100,000 sf

Tax lot 2100, 2.3 ac (RR5) marijuana farming

Tax lot 2301 (F2)

Tax lot 2200 (RR5) dwelling

Tax lot 2300 (F2); additional marijuana farming on this lot is out of the picture to the north; total canopy far exceeds 40,000 sf limit. Minimum 3 acres, probably 4-5 acres (125,000 to 200,000 sf).



Aerial photo from One Gro Facebook post, 24 August 2017



One Gro Investment Group
@OneGroInc
Home
Posts
Reviews
Videos
Photos
About
Community
Events

Daniel Patrick Isaacson - Crewell Marijuana Discussion Group
August 24 at 9:08am · 🌱
A lot of work. A great team. A special place.

At least three violations

- 1. Tax lot 2300: Greatly exceeds canopy limit**
- 2. Tax lot 2400: Greatly exceeds canopy limit**
- 3. Tax lot 2100: Commercial farming on RR5 (AND probably exceeds canopy limit)**

View to ESE from Cedar Park Rd of tax lot
2100, an RR5 lot used for marijuana farming

