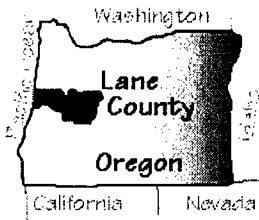


W. b. a.



Report to Lane County Board of Commissioners December 2006

Submitted by Charlotte Riersgard
OSU/Lane County Extension Service (LCE) Staff Chair

Upcoming

OSU/Lane County
Extension Service
Programs/Events

Extension Continues to Bring Knowledge to Life

Pesticide Training:
December 7

NEP Workshop—Breads:
December 9

Youth Nutrition Class:
December 16

Master Gardener Series:
January 10

**Community Gardener
Certificate Series:**
January 11

**Pruning at Thistledown
Farm:**
January 13

4-H New Leader Training:
January 18

Mold Training
January 24

Pantry Cookoff:
March 6

Mold Innovative Grant - Extension continues to move forward on the mold assessment and remediation education programs.

In-service Training – A polycom training was held Wednesday, November 29 to highlight resources that will be helpful to community members and provide an introduction to the navigation of the “Mold in Buildings” soon to be available webpage (www.moldinbuildings.oregonstate.edu). This site includes a variety of resources, linkage to publications and answers to questions.

The goal is to provide information for Extension faculty to respond to consumer and industry questions received at Extension offices across the state.

In addition, an orientation will be provided for hosting professionals and homeowners at the county level.

Educational program for professionals – January 24, 2007, 8:30 am – 12:30 pm,



\$30.00, Portland Community College, Rock Creek Campus. Open to builders, remodelers, realtors, building inspectors, architects, maintenance, facility managers, interior designers, code and permit enforcement, health department, health educators, and HVAC professionals. Certificate of attendance/continuing education provided.

Educational program for community members – January 24, 2007, 6:30 – 8:00 pm, \$10.00, Portland Community College, Rock Creek Campus. Program will focus on information for homeowners and renters.

Presentations will be captured on CD's and will be rebroadcast to Lane County residents in February.

Oregon State
UNIVERSITY

**Extension Service
Lane County**

4-H AND SCHOOL ENRICHMENT

Faculty: Carolyn Ashton



4-H Leaders Training

Three 4-H Leader trainings were conducted, September 13, October 3 and November 16. In attendance were 41 prospective leaders. All have entered the next phase to become a certified leader. 4-H Faculty interviews each new club leader to discuss her/his interest in joining the 4-H program.

4-H School Enrichment

The annual 4-H School Enrichment catalog was distributed to all Lane County schools. It features a lending library for teachers to borrow materials from 14 different project areas to use free of charge. 4-H curricula are designed to meet Oregon Learning benchmarks.

4-H Horse Fall Fun Show

20 participants took part in the 4-H Horse Fall Fun Show held at the Jasper Hills Arena, on Saturday, October 28.

Media

On September 5, 4-H faculty participated in a radio interview with KNND on the topic of the Cultural Connections Curriculum that is available through our School Enrichment Program. Discussed the importance of multi-cultural education in young people's lives.

Wildlife Stewards

There are currently six schools participating in the Wildlife Stewards Program (Cesar Chavez, Family School, Ridge-line Montessori, Dorena School, Village School and River Road Elementary) in Lane County.

Gathering of Gardeners

On September 18, 2006, 4-H had a presence along with other Extension programs at this festival in Cottage Grove where approximately 2,000 participants attended.

Outreach

We are working on creating a 4-H Mexican Folkloric Dance Club. There will be approximately 15 youth members and 2 adult volunteers.

NAE4-HA

4-H Faculty member Carolyn Ashton traveled to Milwaukee, WI to present three program seminars at the National Association of Extension 4-H Agents. Seminars included:

- ◆ Creating a welcoming and inclusive environment for program participants
- ◆ Cultural Connections curriculum – a program designed for 4th – 6th graders to learn about the value of appreciating differences in our society.
- ◆ Motivation for and developmental benefits of youth participation in county 4-H fairs.



These are photos from the Horse Fall Fun Show held at Jasper Hills Arena.



One-third of all traditional 4-H members are in Horse Projects.

Staffing

The 4-H Program welcomes Kelly Makinson in her new position as 4-H Program Assistant. Her responsibilities will be to work with the livestock, small animals, horses and Home Arts and Sciences projects.

October, 2006

4-H Fall Recognition Ceremony

On October 12th, approximately 70 4-H youth members and adult volunteers attended the second annual 4-H Fall Recognition Ceremony. This event was entirely facilitated by the older 4-H youth members (TEEN PAC) who are in the 7-12th grade. The event is held to recognize and celebrate the accomplishments of 4-H county medal winners and 4-H volunteers. This year we honored one 40 year volunteer, Connie Mobley; one 35 year volunteer Enid Savage, and multiple 20, 10, 5 and one year leaders.

4-H Leaders Training

There was a 4-H Leader training conducted on October 3rd, which had 9 prospective leaders who attended these trainings. The trainings include information about the 4-H program including basics of running a club, risk management, etc.

Project Committee Meeting

The Small Animal Committee Meeting was held on Monday, October 16, 2006. The committee discussed the successes and challenges of this past year's fair, and looked to planning next month's Small Animals Show.

COMMERCIAL HORTICULTURE, HOME GARDENING

Faculty: Ross Penhallegon and Assistant: Pat Patterson



Groundwater Guardian—On November 3, 2006, the Lane County Groundwater Affiliate, a group of people concerned about the quality and quantity of groundwater in Lane County received the 2006 Groundwater Guardian designation at the national meeting in Lansing, Michigan. This is the 12th year that the county group has received this designation.

Master Gardeners

The 2006 Master Gardener class held its graduation ceremony on October 17, 2006. Out of the 43 students, 38 completed the training. Applicants for the 2007 class are at an all time high of 107 applicants.

So far we are ahead of last year in the number of phone calls and clients coming to the OSU/Lane County Extension office. We have had over 10,000 phone calls already this year with two months

to go. Over 19,212 public contacts have been made either through the Extension office front door or during various educational events.

Even as the weather turns cold and rainy, the phone continues to ring for people needing help.



Lingonberries

The OSU/lane County Extension office continues to be the international headquarters for lingonberry information and research. The publication titled "Lingonberry Production Guide for the Pacific Northwest" written by Ross Penhallegon, was published and is being requested world-wide. The next big effort is to get new cultivars of lingonberries growing and distributed. Several nurseries in Oregon, Washington, Michigan and Quebec are interested in helping to get the new cultivars distributed.

Oregon State University Extension Service offers educational programs, activities, and materials—*without discrimination based on race, color, religion, sex, sexual orientation, national origin, age, marital status*—as required by Title VI of the Civil Rights Act of 1964, Title IX of the Education Amendments of 1972, and Section 504 of the Rehabilitation Act of 1973. Oregon State University Extension Service is an Equal Opportunity Employer.

FORESTRY

Faculty: Steve Bowers

Conferences, Workshops:
Educational Design or Facilitation

Science, Academia and Forestry Issues:
The OSU "Salvage Impacts Study" with Paul Adams, Forestry Extension Specialist. Eugene. October, 30 participants. 2 hours.



Tree Day: "Logs to Lumber," Field demonstration. Lebanon. August, 70-80 participants, 2 hours.

4-H Camp: Trees in Oregon. Salem. August, 50 participants. 4 presentations of 45 minute each.

Western Regional Tree Farmer of the Year tour: Intensive Forestry. (Eugene. July). 150 participants. 4 tours of 1-hour duration.

Merchandising Logs & Timber: Myrtle Point. November, 30 participants. 3 hours.

Managing Woodland Roads. Roseburg. November, 20 participants. 2 hours.

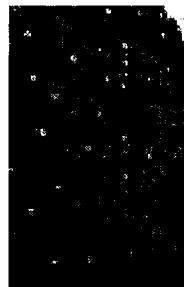


**Timber Stand Improvement:
Small Log Utilization**

Teaching Aids

Steve Bowers is the primary developer in all of the following teaching aids:

- ◆ Harvesting Tips & Techniques. PowerPoint presentation (45 displays).
- ◆ Eastside Log Rules, laminated cards.
- ◆ *Northwest Woodlands (NW):* Tips Form The Treeman. A 1-page educational and entertaining question and answer column. Each issue contains 2 - 4 topics derived from letters, emails, personal conversations, and/or editor's license on questions regarding various forestry topics. *NW* is a quarterly publication.



- ◆ *Editor/Designer/Writer of the Lane Woodland News:* A 12-page newsletter dedicated to woodland owners in Lane County. Fall 2006 issue. Distribution: approx. 900.

We will endeavor to provide public accessibility to services, programs, and activities for people with disabilities. If accommodation is needed to participate at any meeting, please contact the ADA Coordinator at the Lane County office of OSU Extension Service at 682-4243 or 1-800-872-8980 at least 48 hours prior to the scheduled meeting time.

FAMILY AND COMMUNITY DEVELOPMENT (FCD)

Faculty: Susan Busler and Nellie Oehler

Apples in Appealing Ways

An Extension Study Group lesson was offered on October 19th for an audience of 22 participants including Master Food Preservers, Master Gardeners, Extension Study Group members and the general public. Participants learned about the variety of apples available, their characteristics, nutritional benefits, and storage and preservation tips.

"I didn't know I could use applesauce to replace fat in some recipes. I plan to be more careful on washing my apples and will change the way I've been making my apple cider – I didn't know I had to pasteurize it."

-Consumer Comment



Master Food Preservers/Family Food Education Volunteers

- ◆ Volunteers staffed the hotline answering over 6500 calls from mid June through mid October. Approximately 70% of the calls were safety related indicating the renewed interest for food preservation.
- ◆ The spinach recall resulted in dozens of calls to the Lane County Extension office requesting information on E coli and food safety.
- ◆ The Food Faire held in September was highly successful. 87 participants learned how to safely can fish, meat, tomatoes and salsa, pie fillings, jams and jellies, food drying and convenience foods for the freezer for half the cost of commercial products.
- ◆ Extension volunteers donated 5869 hours this season—this amounts to \$105,876.76 (at \$18.04 for each volunteer hour per the Independent Sector).

Magic of Slow Cooker One-Pot Meals

A class was held at the Willamalane Adult Activity Center, Springfield. A very enthusiastic and inquisitive audience of 24 people learned about the variety of slow cookers on the market, how to adapt recipes to use with a slow cooker and food safety tips for using your slow cooker.

Women: Secure Your Financial Future

A four week series was completed during October, 2006. 100% of the participants indicated they feel more confident making financial decisions. Participants indicated the most valuable information was learning how much money is needed to reach retirement goals and that it's never too late to get started.

Food Pantry Cookoff

Mark your calendars for Tuesday, March 6, 2007 (4:00-7:00 p.m.) at FOOD for Lane County.

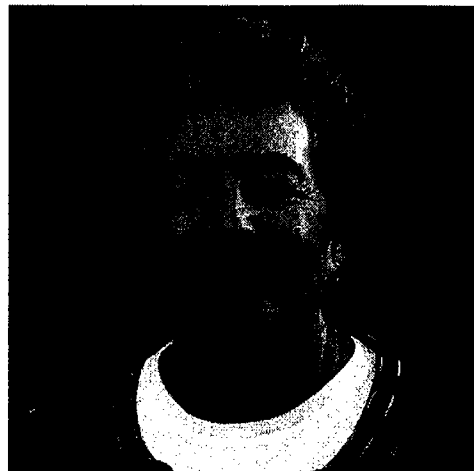
Note to Anna: Please keep in touch, so we can invite you to be one of the celebrity judges.

NUTRITION EDUCATION PROGRAM (NEP)

Faculty: Charlotte Riersgard, Karren Cholewinski and Dana Baxter

Nutrition Education Program - Assistant Highlight

Nancy DeSpain was honored by OSU with the state-wide Program Assistant of the Year award. She was hired 26 years ago as a half-time Expanded Food & Nutrition Education Program (EFNEP) Nutrition Program Assistant. During those early years, she was expected to visit a "homemaker" every 30 minutes. She demonstrated a recipe and shared nutrition information. The nutrition messages at that time were about the four food groups. She would visit the homemaker once a week for 12-16 consecutive weeks. She has seen many changes over the years.



Nancy DeSpain
26 years of teaching in Lane County

In 2003, Nancy received a promotion to full-time Education Program Assistant, which was followed by another promotion in 2004 to Nutrition Education Coordinator. Her coordinator duties have her managing the schedule for the 60+ volunteers for the Food Pantry Project. She ensures a volunteer is available to provide a monthly food demonstration at each of the 20 FOOD for Lane County pantry sites.

Nancy DeSpain continues to make a difference. Her dedication to educating and improving the lives of our limited-resource citizens, the mission of OSU Extension's nutrition program, and her desire to collaborate with county agencies have greatly contributed to her success as an educator in Lane County.

Enrollment Types	Adult	Family Members Potentially Influenced by Adult Participation in Program	Youth
OFNP	150	337	290
EFNEP	35	120	77
Out Reaches and/or Single Events			
WIC	192	192	
Food Pantries	1510	1510	59
DHS	28	28	
Totals	1,915	2,187	426
Community Partners and/or Agencies: Head Start-Creswell, DHS-Springfield, McKenzie Center & West 11 th Family Center, Laurel Hill, St. Vincent de Paul-Second Chance Renter's Rehabilitation Program, Shelter Care-Uhlhorn, Options Counseling Center-Florence, Willamette Family Treatment Center, TOPS Club, Confederated Tribes of Coos, Lower Umpqua & Siuslaw Indians			
Community Locations for Classes: Springfield Lutheran Church, Royal Oaks Mobile Park (Bethel Area), West Side Christian Church			
Schools: Cottage Grove Schools-Bohemia Elementary & Kennedy Alternative High School; Eugene Schools-Adams, Aubrey Park & River Road Elementary Schools, 4-J's Opportunity Center; Springfield Schools-Mt. Vernon, Guy Lee, Riverbend, Page, Douglas Gardens, Centennial Elementary Schools, Springfield High School's Gateway Program			