

How does contact tracing work?



If you are diagnosed with COVID-19, a public health monitor will ask you about places you have been and the people you have spent time with recently.

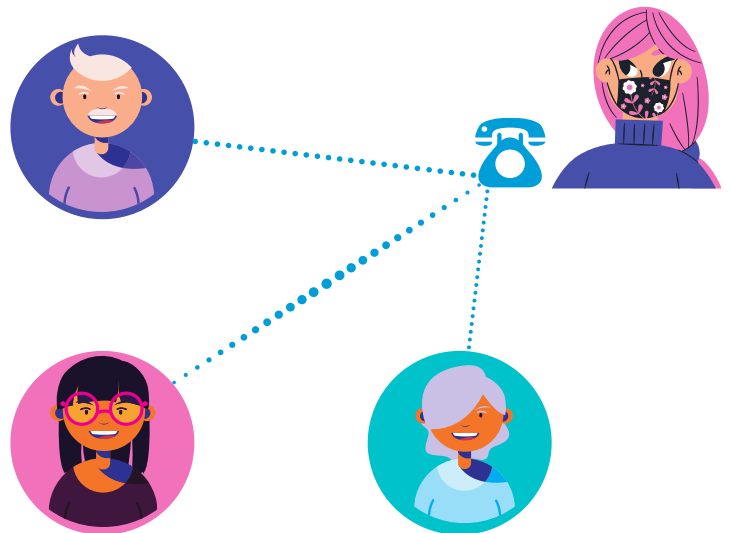
Your information is confidential and will not be shared. You will not be asked about your immigration status.

 Your role of providing all contacts is key to slowing the spread of COVID-19.

The public health monitor will call the people you may have been in contact with recently.





The monitor will...

- 1) Tell the contact that they may have been exposed to COVID-19.
- 2) Ask the contact about their health.
- 3) Give the contact information about what to look for and what to do if they develop symptoms.
- 4) **NOT** tell the contact your name or any personal information.



 Answer the call.

If you have had contact with someone who has tested positive for COVID-19:

-  You will be encouraged to **quarantine**. This means stay home and 6 feet away from everyone for 14 days.
-  You will be encouraged to get a COVID-19 test if you have symptoms or feel sick.
-  You will also be asked about the places you have been and the people you have spent time with recently, if you develop COVID-19-like symptoms.
-  You will be connected to local community resources if needed.

Questions?

Visit: lanecountyor.gov/coronavirus

Call the Lane County Coronavirus Call Center: 541-682-1380

